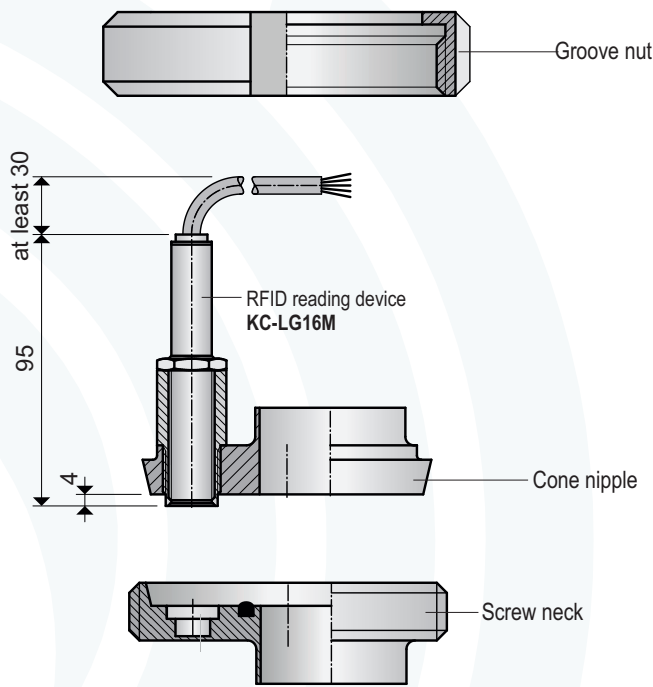


Appliance information

for use at hygienic hose coupling stations

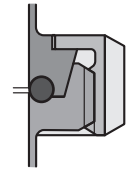
Screwed pipe connections

Cone nipple with reading device, screw neck with transponder



Type	DN	W
K-RVNM080V4A		

Aseptic screwed pipe connections



Type	DN	W	KL	Pipe
KLG-RVKR050MI-V4A 0				53x1.5

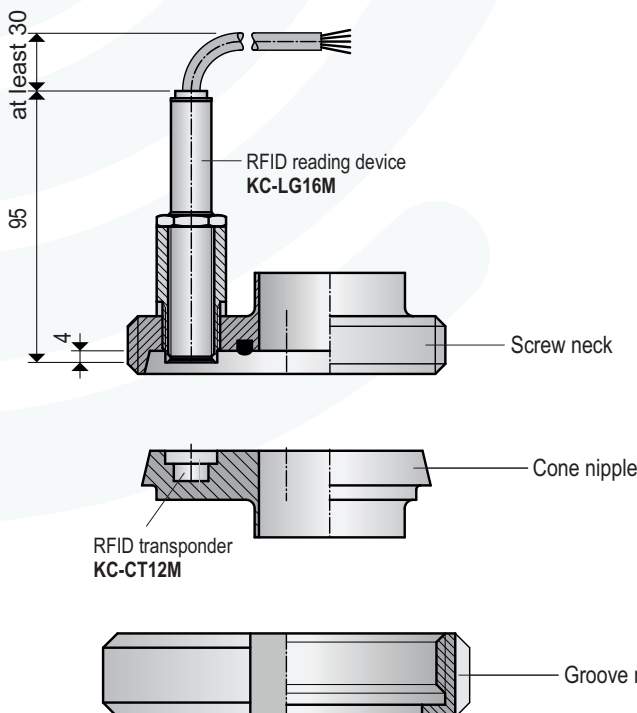
Type	DN	DR	W	KL	Pipe
KLG-RVKR050ASEP-V4A 0					53x1.5

Type	DN	DR	W	KL	Pipe
KCT-RVGR050MINR-V4A 0					53x1.5

Type	DN	W	KL	Pipe
KCT-RVGR050AS-V4A 0				53x1.5

Screwed pipe connections

Screw neck with reading device, cone nipple with transponder



Type	DN	DR	W	KL	Pipe
KLG-RVGR050MINR-V4A 0					53x1.5

Type	DN	W	KL	Pipe
KLG-RVGR050AS-V4A 0				53x1.5

Type	DN	W	KL	Pipe
KCT-RVKR050MI-V4A 0				53x1.5

Type	DN	DR	W	KL	Pipe
KCT-RVKR050ASEP-V4A 0					53x1.5

Type	DN	W
K-RVNM080V4A		

DN = Nominal size
MI = Dairy pipe
AS = Aseptic
DR = Sealing ring material
W = Couplings material
KL = Cable length

Notes

A large grid area for taking notes, with a faint circular logo watermark on the right side.